

**ES IST EIN
VORWERK®!**



ADDITION

WORKBOOK

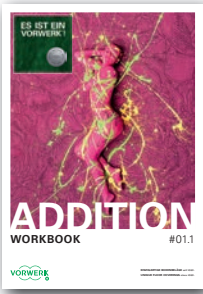
#01.1



EINZIGARTIGE BODENBELÄGE *seit 1883.*
UNIQUE FLOOR COVERINGS *since 1883.*



INHALT | CONTENTS | SOMMAIRE



WORKBOOK #01.1

04 – #CUT



- 04 **ALEXIS**
- Passion 1006
- 06 **BRILLIANCE**
- 08 **LIMES** |
- Passion 1044
- 10 **LIMES DESIGN** |
- Passion 1045

12 – #LOOP



- 12 **PENTA**
- Passion 1046
- 14 **SCALA** |

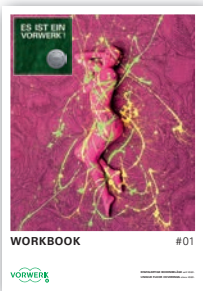
16 – #WOVEN



- 16 **IDEA DESIGN** |
- Exclusive 1104



Hergestellt aus Recycling-Garn
Made from recycled yarn
Fabriqués à base de fils recyclés d'



Diese Broschüre ist eine Ergänzung zum
This brochure is a supplement to the
Cette brochure est un complément au

WORKBOOK #01



INHALT | CONTENTS | SOMMAIRE

- 04 **Über uns** | About us | Sur nous
- 10 **Nachhaltigkeit** | Sustainability | Durabilité
- 16 **Angebotsformen** | Product range | Gamme de produits
- 22 **Auftragsfertigung** | Made-to-order production | Fabrication sur commande

26 – #CUT



- 30 **FRISEA**
- Superior 1012
- 32 **VARIA** |
- Superior 1013
- 34 **VARIA DESIGN** | |
- Superior 1014
- 40 **FORMA**
- Superior 1017
- 42 **FORMA DESIGN** |
- Superior 1018
- 52 **TREMO**
- Superior 1036
- 54 **SAMOS DESIGN**
- Superior 1038
- 66 **SAMOS**
- Superior 1040
- 68 **MODENA DE LUXE**
- Superior 1053
- 70 **DACAPO**
- Superior 1071
- 72 **ELARA**
- Exclusive 1009
- 74 **COSA**
- Essential 1076
- 76 **LYRICA**
- Superior 1084
- 78 **VIOLA**
- Superior 1065
- 80 **MIRA**
- Superior 1067
- 82 **BARISTA**
- Superior 1069
- 84 **NUTRIA COMFORT**
- Superior 1072
- 86 **SAFIRA**
- Exclusive 1050
- 88 **ROMANCE**
- Exclusive 1066

92 – #LOOP



- 94 **ARENA** |
- Essential 1027
- 96 **FORIS**
- Essential 1031
- 98 **PUNCTUM**
- Essential 1052
- 100 **STRADA** |
- Essential 1036
- 102 **OMBRA**
- Essential 1050
- 104 **PARMA**
- Essential 1014
- 106 **CANTURA DESIGN** | |
- Superior 1051 | 1053 | 1054
- 114 **NOX** |
- Superior 1052
- 116 **STRATO** |
- 124 **RUSTICA**
- Essential 1008

126 – #WOVEN



- 130 **FORSA**
- Exclusive 1015
- 140 **NANDOU**
- Exclusive 1023
- 142 **NANDOU DESIGN**
- Exclusive 1024 | 1025
- 148 **FORMAT** |
- Exclusive 1030
- 152 **IDEA MELANGE** |
- Exclusive 1103
- 154 **IDEA DESIGN** |
- Exclusive 1104

156 – #TILES



- 160 **Vorteile unserer Fliesen** | Advantages of our carpet tiles | Avantages de nos dalles de moquette
- 164 **Unsere Fliesenformen** | Our carpet tile shapes | Nos formes de dalles de moquette
- 198 **Online-Fliesenkonfigurator** | Online tile configurator | Configurateur en ligne de dalles

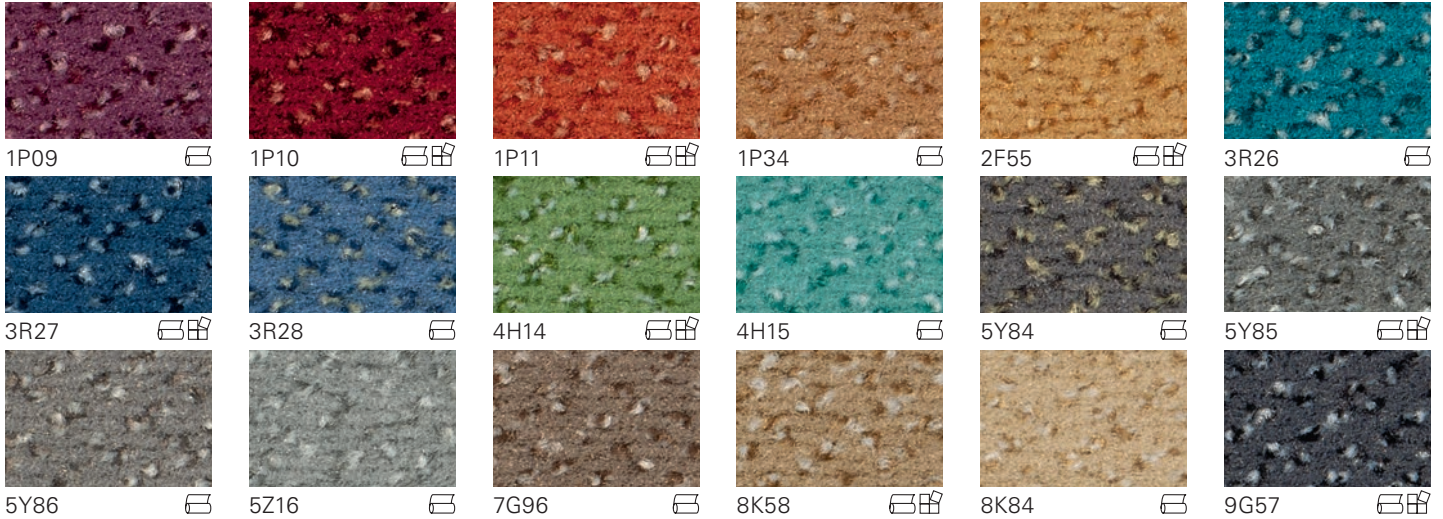
200 – #RUGS



- 204 **Kettel-Teppich** | Overlocked rug | Moquette surpiquée
- 206 **Deluxe-Teppich** | Deluxe rug | Moquette Deluxe

- 208 **Musterservice** | Sample service | Service échantillon
- 209 **Sockelleisten** | Skirting boards | Pintine
- 210 **Index Produkte** | Index products | Index produits

Hergestellt aus Recycling-Garn
Made from recycled yarn
Fabriqués à base de fils recyclés d'



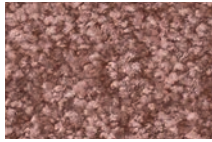
Konstruktion Construction Description	1/10" Getufteter Velours, COC, tuftgemustert 1/10" Tufted velours, COC, tuft patterned 1/10" Velours tufté, COC, tufté à dessin
Polnutschicht Pile material Composition de la fibre	100 % PA 6
Strapazierwert Durability rating Usage	EN 1307 intensiv 32 32 intensive 32 intensif
Komfortwert Comfort class Confort	Komfortklasse LC1 Luxury class LC1 Classe confort LC1
Stuhlrolleneignung Castor chair use Effet d'une chaise à roulette	gelegentliche Nutzung occasional use utilisation occasionnelle
Gesamtdicke Total thickness Epaisseur totale	EN 1307 Broadloom: ≈ 6,7 mm Carpet tile: ≈ 7,6 mm
Gesamtgewicht Total weight Poids total	EN 1307 Broadloom: ≈ 1.470 g/m ² Carpet tile: ≈ 3.800 g/m ²
Poleinsatzgewicht Pile weight Poids de velours	EN 1307 ≈ 560 g/m ²
Brandverhalten Fire rating Comportement au feu	DIN EN 13501-1 Broadloom: B _{fl} -s1 Carpet tile 50 × 50 cm: B _{fl} -s1 ASTM E 648 + ASTM D2859
Trittschallschutz Impact noise insulation Isolation acoustique	DIN EN ISO 10140 Broadloom: 24 dB Carpet tile: 25 dB
Schallabsorptionsgrad Sound absorption Absorption phonique	DIN EN ISO 354 Broadloom: α _w 0,XX Carpet tile: α _w 0,XX

Broadloom

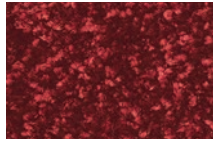
Carpet tile



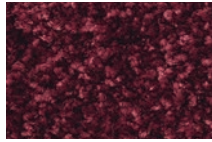




1P79



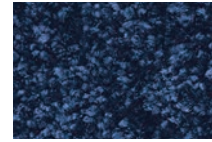
1P80



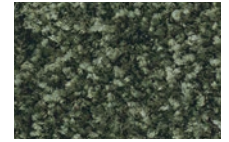
1P81



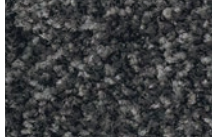
2F86



3R97



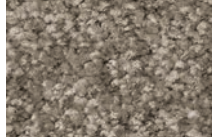
4H57



50A9



7H30



8L19



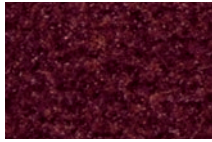
8L20

Konstruktion Construction Description		1/10" Getufteter Velours, uni, brilliant 1/10" Tufted velours, plain, brilliant 1/10" Velours tufté, uni, brilliant
Polnutschicht Pile material Composition de la fibre		100 % PA 6
Strapazierwert Durability rating Usage	EN 1307	intensiv 32 32 intensive 32 intensif
Komfortwert Comfort class Confort		Komfortklasse LC5 Luxury class LC5 Classe confort LC5
Stuhlleneignung Castor chair use Effet d'une chaise à roulette		intensive Nutzung intensive use utilisation intensive
Gesamtdicke Total thickness Epaisseur totale	EN 1307	≈ 8,5 mm
Gesamtgewicht Total weight Poids total	EN 1307	≈ 2.160 g/m ²
Poleinsatzgewicht Pile weight Poids de velours	EN 1307	≈ 1.375 g/m ²
Brandverhalten Fire rating Comportement au feu	DIN EN 13501-1	B _{fl} -s1 ASTM E 648 + ASTM D2859
Trittschallschutz Impact noise insulation Isolation acoustique	DIN EN ISO 10140	25 dB
Schallabsorptionsgrad Sound absorption Absorption phonique	DIN EN ISO 354	α _w 0,25

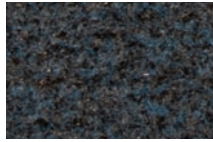
Broadloom



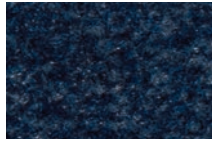




1M64



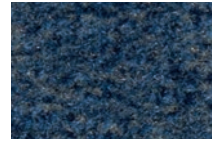
3P50



3P51



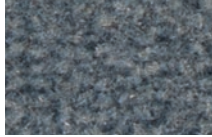
3P52



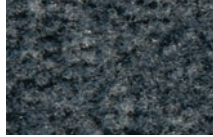
3Q53



4G22



5W31



5W32



5W33



7G16



8J41



9F52

Konstruktion Construction Description		1/10" Getufteter Velours, meliert 1/10" Tufted velours, mottled 1/10" Velours tufté, mélangé
Polnutschicht Pile material Composition de la fibre		100 % PA 6, ECONYL®
Strapazierwert Durability rating Usage	EN 1307	extrem 33 33 extreme 33 extrême
Komfortwert Comfort class Confort		Komfortklasse LC1 Luxury class LC1 Classe confort LC1
Stuhlrolleneignung Castor chair use Effet d'une chaise à roulette		intensive Nutzung intensive use utilisation intensive
Gesamtdicke Total thickness Epaisseur totale	EN 1307	≈ 5,2 mm
Gesamtgewicht Total weight Poids total	EN 1307	≈ 1.350 g/m ²
Poleinsatzgewicht Pile weight Poids de velours	EN 1307	≈ 610 g/m ²
Brandverhalten Fire rating Comportement au feu	DIN EN 13501-1	B _{fl} -s1 ASTM E 648 + ASTM D2859
Trittschallschutz Impact noise insulation Isolation acoustique	DIN EN ISO 10140	26 dB
Schallabsorptionsgrad Sound absorption Absorption phonique	DIN EN ISO 354	αw 0,15



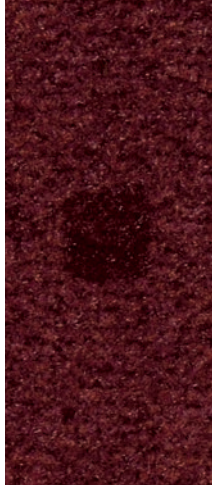
Broadloom





Design 4297-1

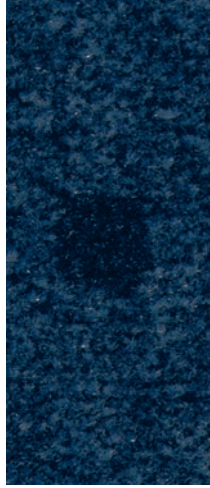
Rapport: ≈ B 6 × L 6 cm



1N11



3Q21



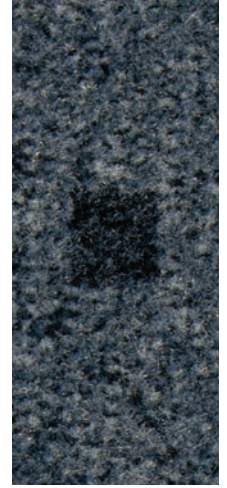
3Q22



4G57



5X29



5X30



7G44



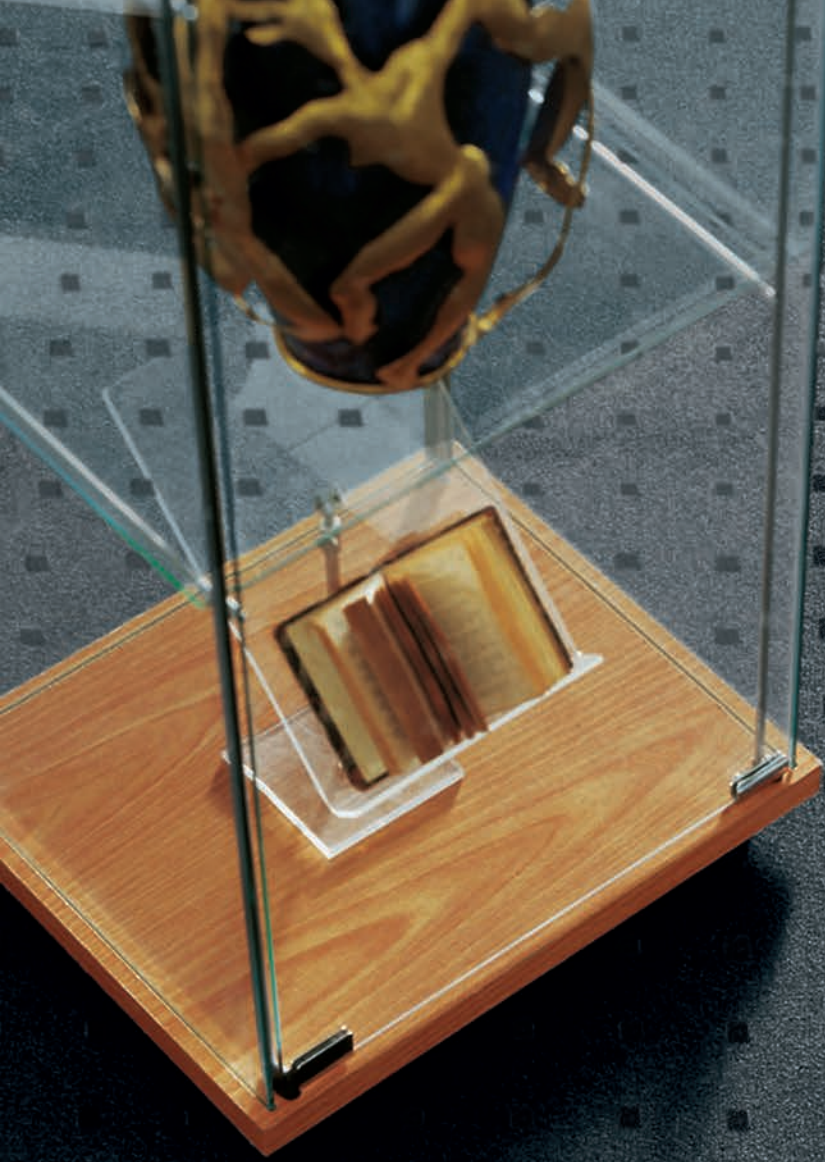
9F92

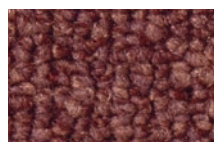
Konstruktion Construction Description	1/10" Getufteter Velours, bedruckt 1/10" Tufted velours, printed 1/10" Velours tufté, imprimé
Polnutschicht Pile material Composition de la fibre	100 % PA 6, ECONYL®
Strapazierwert Durability rating Usage	EN 1307 extrem 33 33 extreme 33 extrême
Komfortwert Comfort class Confort	Komfortklasse LC1 Luxury class LC1 Classe confort LC1
Stuhlrolleneignung Castor chair use Effet d'une chaise à roulette	intensive Nutzung intensive use utilisation intensive
Gesamtdicke Total thickness Epaisseur totale	EN 1307 ≈ 5,2 mm
Gesamtgewicht Total weight Poids total	EN 1307 ≈ 1.350 g/m ²
Poleinsatzgewicht Pile weight Poids de velours	EN 1307 ≈ 610 g/m ²
Brandverhalten Fire rating Comportement au feu	DIN EN 13501-1 B _{fl} -s1 ASTM E 648 + ASTM D2859
Trittschallschutz Impact noise insulation Isolation acoustique	DIN EN ISO 10140 26 dB
Schallabsorptionsgrad Sound absorption Absorption phonique	DIN EN ISO 354 α _w 0,15

ECONYL®
Made with 100% Regenerated Nylon

Broadloom



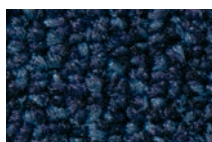




1N09



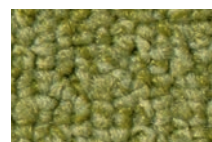
1N10



3Q19



3Q20



4G56



5X26



5X27



5X28



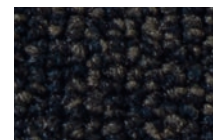
7G43



8J74



8J75



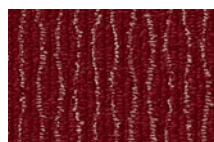
9F91

Konstruktion Construction Description		1/10" Getuftete Schlinge, meliert 1/10" Tufted loop, mottled 1/10" Bouclé tufté, mélangé
Polnutschicht Pile material Composition de la fibre		100 % PA 6
Strapazierwert Durability rating Usage	EN 1307	extrem 33 33 extreme 33 extrême
Komfortwert Comfort class Confort		Komfortklasse LC1 Luxury class LC1 Classe confort LC1
Stuhlrolleneignung Castor chair use Effet d'une chaise à roulette		intensive Nutzung intensive use utilisation intensive
Gesamtdicke Total thickness Epaisseur totale	EN 1307	≈ 5,4 mm
Gesamtgewicht Total weight Poids total	EN 1307	≈ 1.630 g/m ²
Poleinsatzgewicht Pile weight Poids de velours	EN 1307	≈ 630 g/m ²
Brandverhalten Fire rating Comportement au feu	DIN EN 13501-1	C _{fl} -s1 ASTM E 648 + ASTM D2859
Trittschallschutz Impact noise insulation Isolation acoustique	DIN EN ISO 10140	24 dB
Schallabsorptionsgrad Sound absorption Absorption phonique	DIN EN ISO 354	α _w 0,15

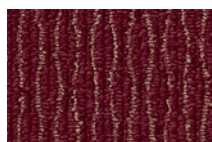
Broadloom







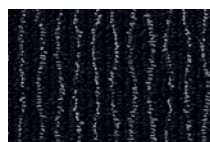
1P82



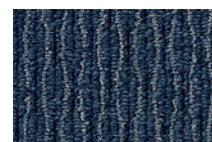
1P83



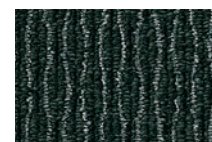
2F87



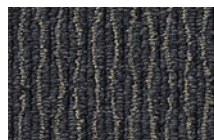
3R99



3S00



4H58



51A0



7H31



7H32



9H01

Konstruktion Construction Description		1/10" Getufteter Schlinge, tuftgemustert 1/10" Tufted loop pile, tuft patterned 1/10" Bouclé tufté, tufté à dessin
Polnutschicht Pile material Composition de la fibre		100 % PA 6, ECONYL®
Strapazierwert Durability rating Usage	EN 1307	extrem 33 33 extreme 33 extrême
Komfortwert Comfort class Confort		Komfortklasse LC2 Luxury class LC2 Classe confort LC2
Stuhlleneignung Castor chair use Effet d'une chaise à roulette		intensive Nutzung intensive use utilisation intensive
Gesamtdicke Total thickness Epaisseur totale	EN 1307	≈ 6,0 mm
Gesamtgewicht Total weight Poids total	EN 1307	≈ 1.695 g/m ²
Poleinsatzgewicht Pile weight Poids de velours	EN 1307	≈ 675 g/m ²
Brandverhalten Fire rating Comportement au feu	DIN EN 13501-1	B _{fl} -s1 ASTM E 648 + ASTM D2859
Trittschallschutz Impact noise insulation Isolation acoustique	DIN EN ISO 10140	20 dB
Schallabsorptionsgrad Sound absorption Absorption phonique	DIN EN ISO 354	α _w 0,15

ECONYL®
Made with 100% Regenerated Nylon

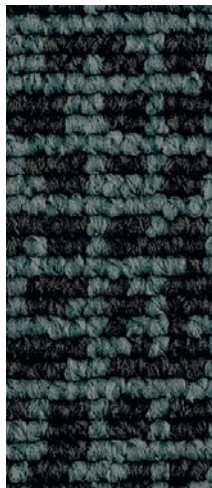
Broadloom



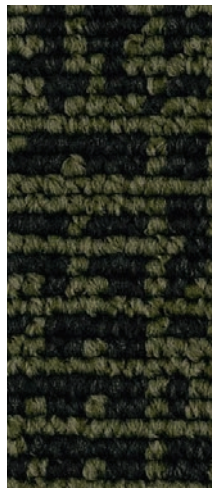


Design 8273

Rapport: ≈ B 200 × L 200 cm



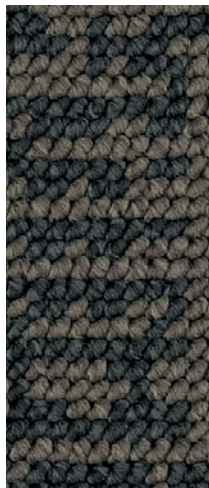
3R82



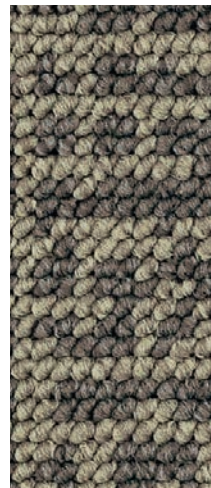
4H43



5Z58



7H19



8L12

Konstruktion Construction Description		Gewebte Schlinge, gemustert Woven loop pile, patterned Tissé bouclé, à motifs
Polnutschicht Pile material Composition de la fibre		100 % PA 6, ECONYL®
Strapazierwert Durability rating Usage	EN 1307	extrem 33 33 extreme 33 extrême
Komfortwert Comfort class Confort		Komfortklasse LC3 Luxury class LC3 Classe confort LC3
Stuhlleneignung Castor chair use Effet d'une chaise à roulette		intensive Nutzung intensive use utilisation intensive
Gesamtdicke Total thickness Epaisseur totale	EN 1307	≈ 6,0 mm
Gesamtgewicht Total weight Poids total	EN 1307	≈ 2.200 g/m ²
Poleinsatzgewicht Pile weight Poids de velours	EN 1307	≈ 1.000 g/m ²
Brandverhalten Fire rating Comportement au feu	DIN EN 13501-1	C _{fl} -s1 ASTM E 648 + ASTM D2859
Trittschallschutz Impact noise insulation Isolation acoustique	DIN EN ISO 10140	22 dB
Schallabsorptionsgrad Sound absorption Absorption phonique	DIN EN ISO 354	αw 0,15

ECONYL®
Made with 100% Regenerated Nylon

Broadloom





Design 8275

Rapport: \approx B 10 \times L 10 cm



3R81



5Z56



5Z57



7H18



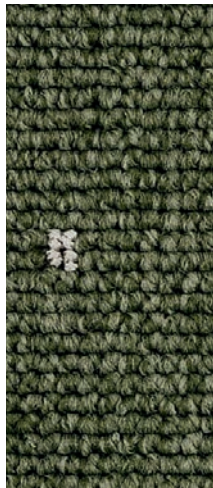
8L11

Design 8152

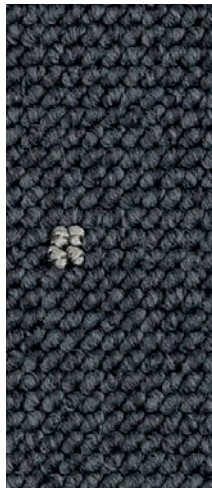
Rapport: \approx B 50 \times L 50 cm



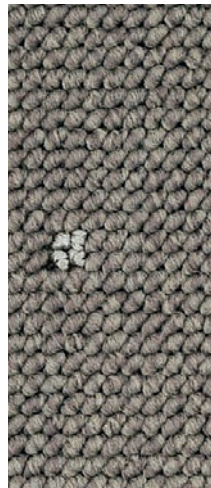
3R78



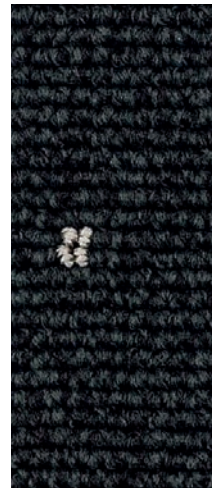
4H42



5Z54



7H16



9G91

Die technischen Daten dieses Artikels finden Sie auf Seite 16 oder über den QR Code.
You can find the technical data for this item on page 16 or via the QR code.
Les données techniques de cet article se trouvent à la page 16 ou via le code QR.

ECONYL
Made with 100% Regenerated Nylon

Broadloom





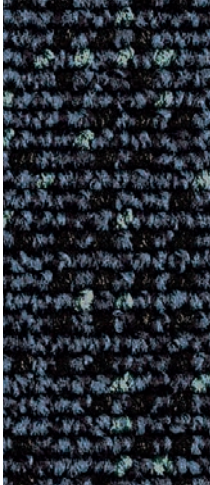
IDEA DESIGN, Design 8275 | 7H18



IDEA DESIGN, Design 8152 | 9G91

Design 8274

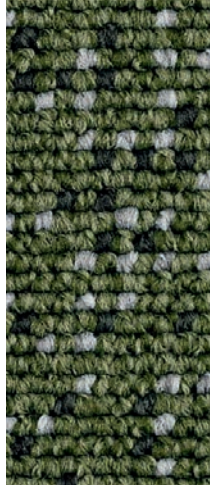
Rapport: ≈ B 66,5 × L 60 cm



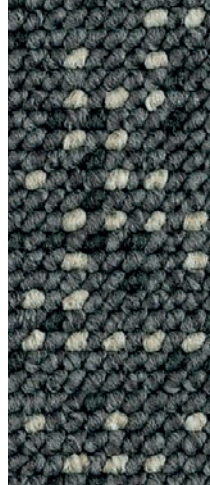
3R83



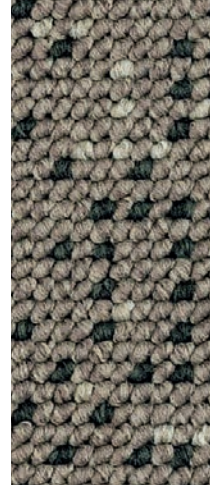
3R84



4H44



5Z59



7H20

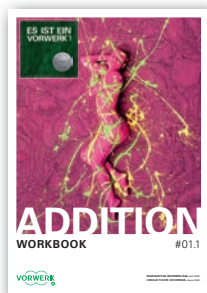
Die technischen Daten dieses Artikels finden Sie auf Seite 16 oder über den QR Code.
You can find the technical data for this item on page 16 or via the QR code.
Les données techniques de cet article se trouvent à la page 16 ou via le code QR.

ECONYL
Made with 100% Regenerated Nylon

Broadloom







WORKBOOK #01.1

TEPPICHBODEN | BROADLOOM | MOQUETTE EN LÉ

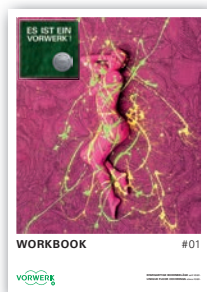
Alexis	04
Brilliance	06
Idea Design ♻️	16
Limes ♻️	08
Limes Design ♻️	10
Penta	12
Scala ♻️	14

FLIESEN | TILES | DALLES DE MOQUETTES

Alexis	04
--------	----

TEPPICH | RUG | TAPIS

Alexis	04
Brilliance	06
Limes ♻️	08
Penta	12
Scala ♻️	14



Weitere Produkte finden Sie im
You can find more products in the
Vous trouverez d'autres produits dans le

WORKBOOK #01

TEPPICHBODEN | BROADLOOM | MOQUETTE EN LÉ

Arena ♻️	94
Barista	82
Contura Design ♻️	106
Cosa	74
Dacapo	70
Elara	72
Foris	96
Forma	40
Forma Design	42
Format ♻️	148
Forsa	130
Frisea	30
Idea Design ♻️	154
Idea Melange ♻️	152
Lyrice	76
Mira	80
Modena de Luxe	68
Nandou	140
Nandou Design	142
Nutria Comfort	84
Parma	104
Punctum	98
Romance	88
Rustica	124
Safira	86
Samos	66
Samos Design	54
Strada ♻️	100
Tremo	52
Varia ♻️	32
Varia Design ♻️	34
Viola	78

AKUSTIKFLIESEN | ACOUSTIC TILES | DALLES DE MOQUETTES ACOUSTIQUES

Arena ♻️	94
Contura Design ♻️	106
Elara	72
Forma	40
Forma Design	42
Frisea	30
Nox ♻️	114
Ombra	102
Strada ♻️	100
Strato ♻️	116
Tremo	52
Varia ♻️	32
Varia Design ♻️	34

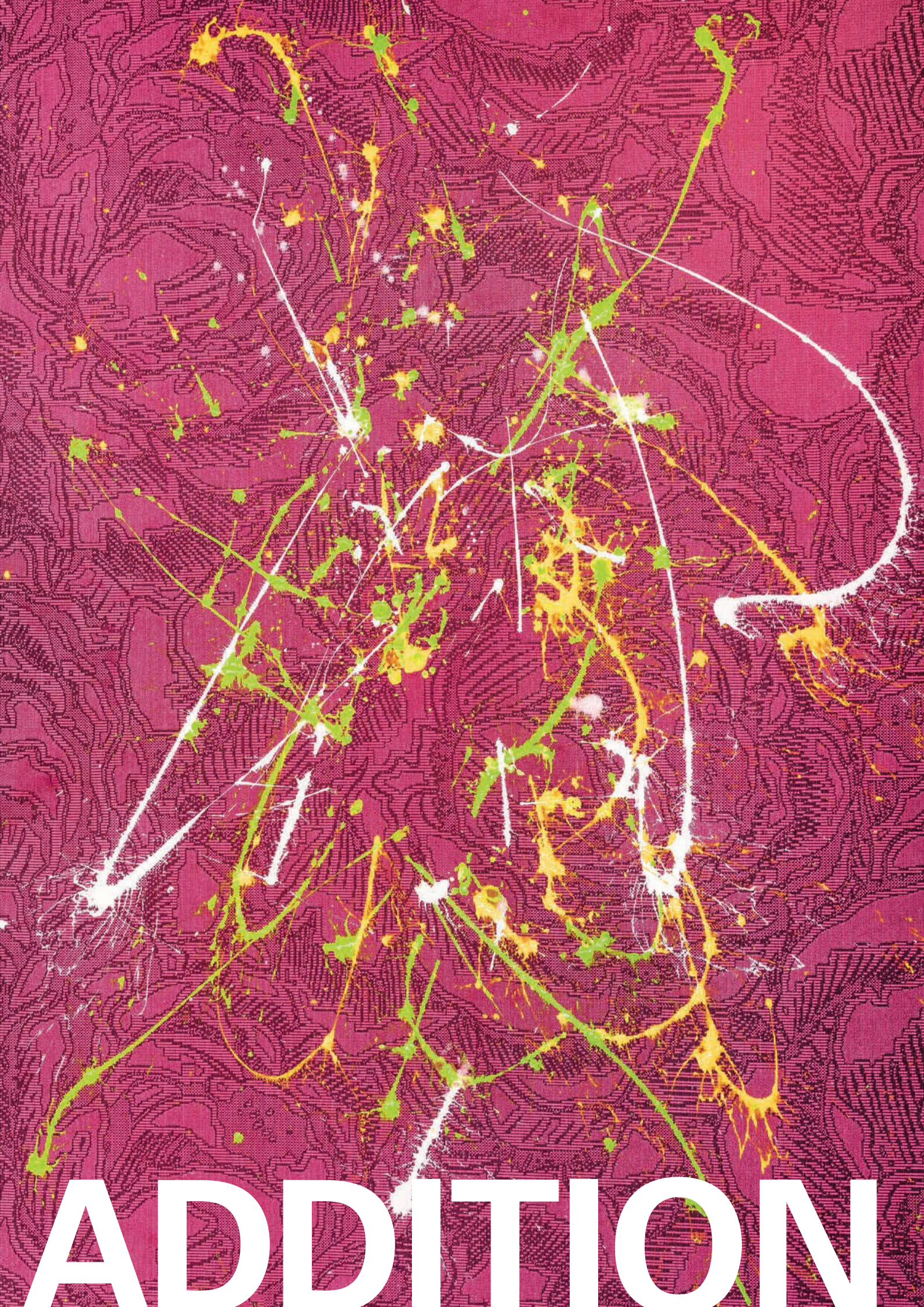
FLIESENFORMEN | CARPET TILE SHAPES | FORMES DE DALLES DE MOQUETTE

Crystal	190
Edge	182
Flake	172
Plank	178
Prism	186
Square	176
Standardform	164
Tie	194
Wave	168

TEPPICH | RUG | TAPIS

Arena ♻️	94
Barista	82
Contura Design ♻️	106
Cosa	74
Dacapo	70
Elara	72
Foris	96
Forma	40
Forma Design	42
Frisea	30
Lyrice	76
Mira	80
Modena de Luxe	68
Nutria Comfort	84
Parma	104
Punctum	98
Romance	88
Rustica	124
Safira	86
Samos	66
Samos Design	54
Strada ♻️	100
Tremo	52
Varia ♻️	32
Varia Design ♻️	34
Viola	78





ADDITION

Vorwerk® flooring

**Hamelner Teppichwerke
GmbH & Co. KG**

Kuhlmannstraße 11
31785 Hameln
Germany

Telefon:

05151 103-0

Telefon Vertrieb und Musterservice:

0800 100 3885 (D)

info@vorwerk-teppich.de

www.vorwerk-flooring.de

International:

+49 5151 103-734

+43 5574 82598 (Österreich)

+41 55 2118278 (Schweiz)

international@vorwerk-teppich.de

www.vorwerk-flooring.com

Besuchen Sie uns auch hier: | Visit us here as well: | Visitez-nous ici aussi :     

Vorwerk and the Vorwerk logo are registered trademarks of the Vorwerk Group, Wuppertal.



EINZIGARTIGE BODENBELÄGE *seit 1883.*
UNIQUE FLOOR COVERINGS *since 1883.*